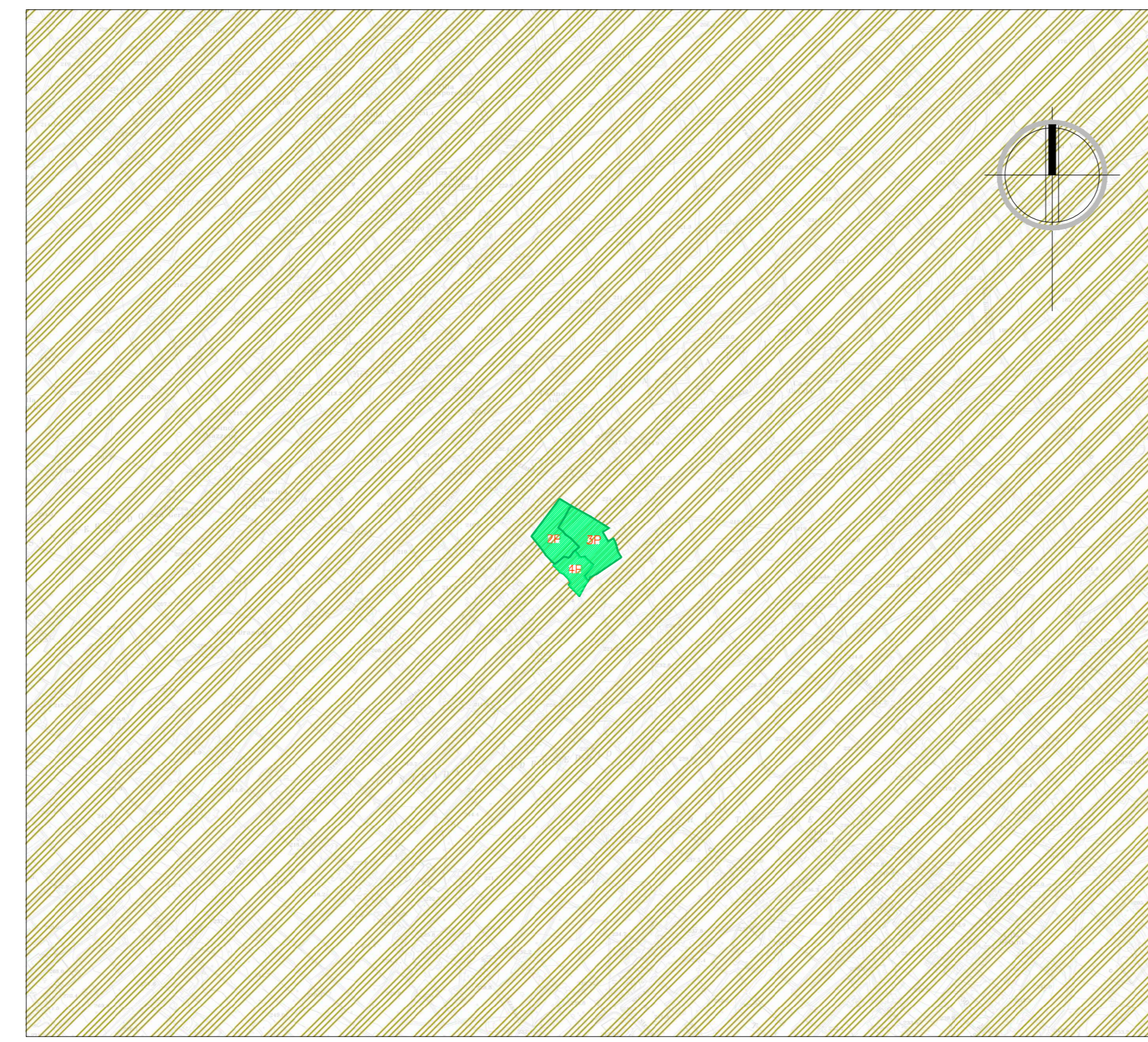
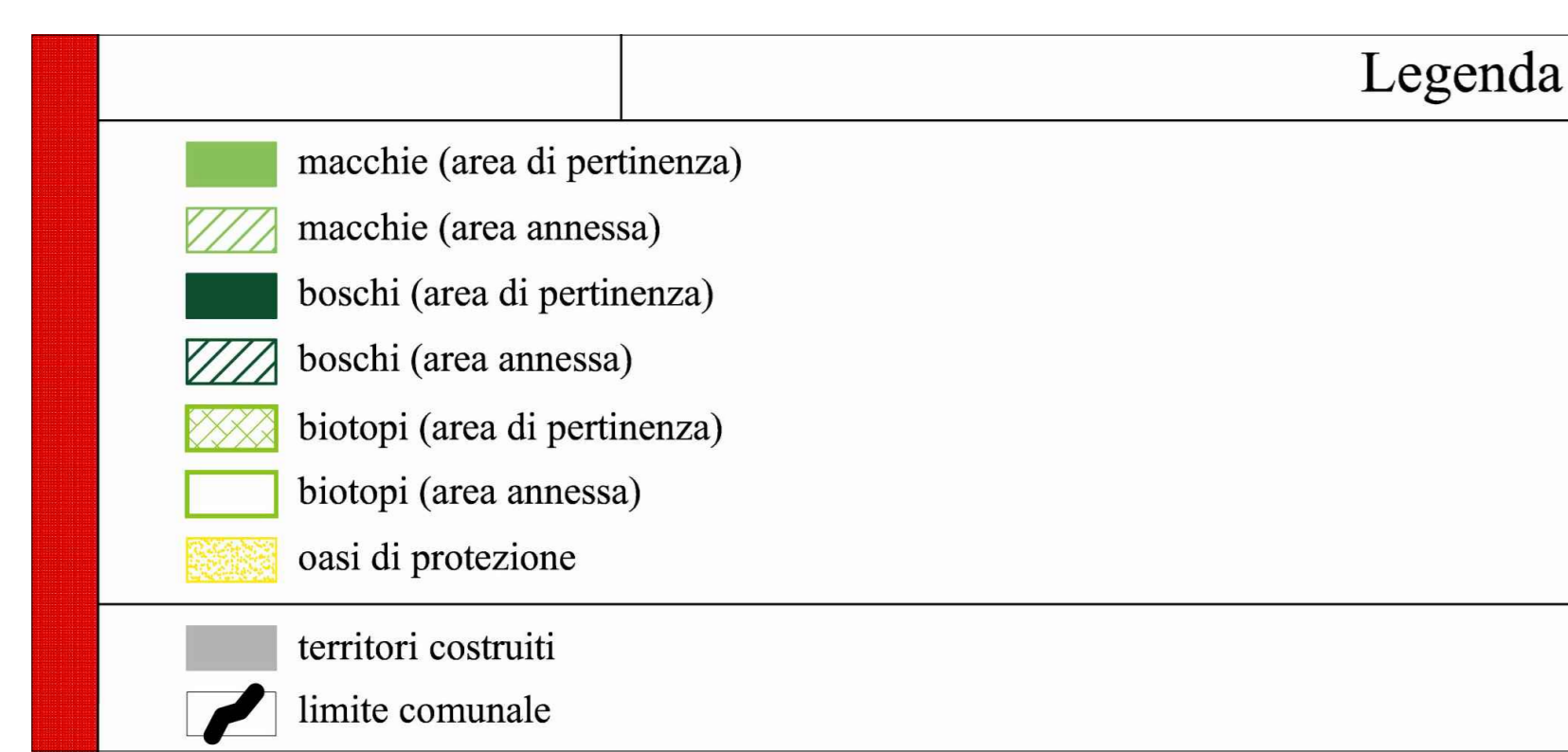
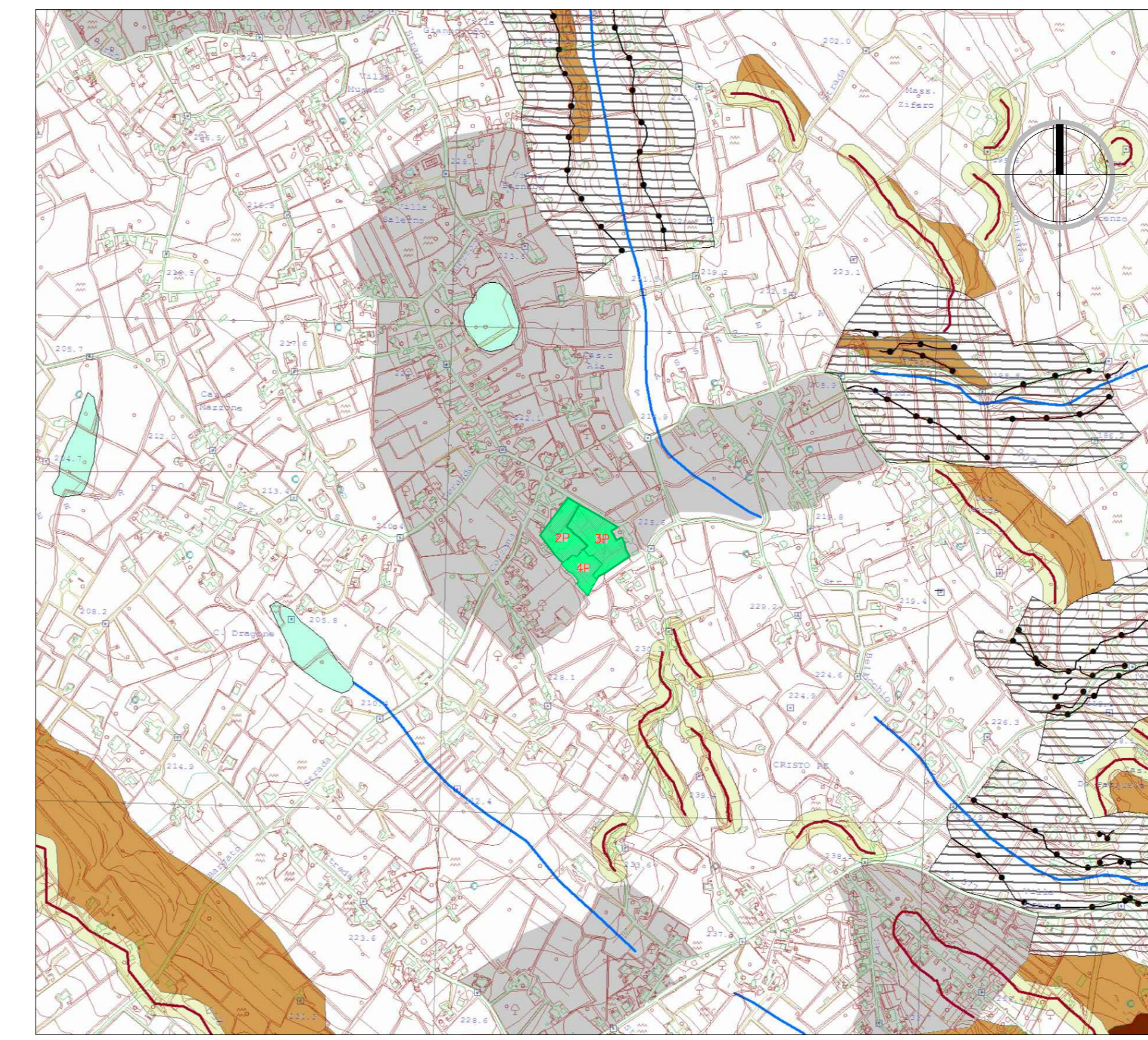
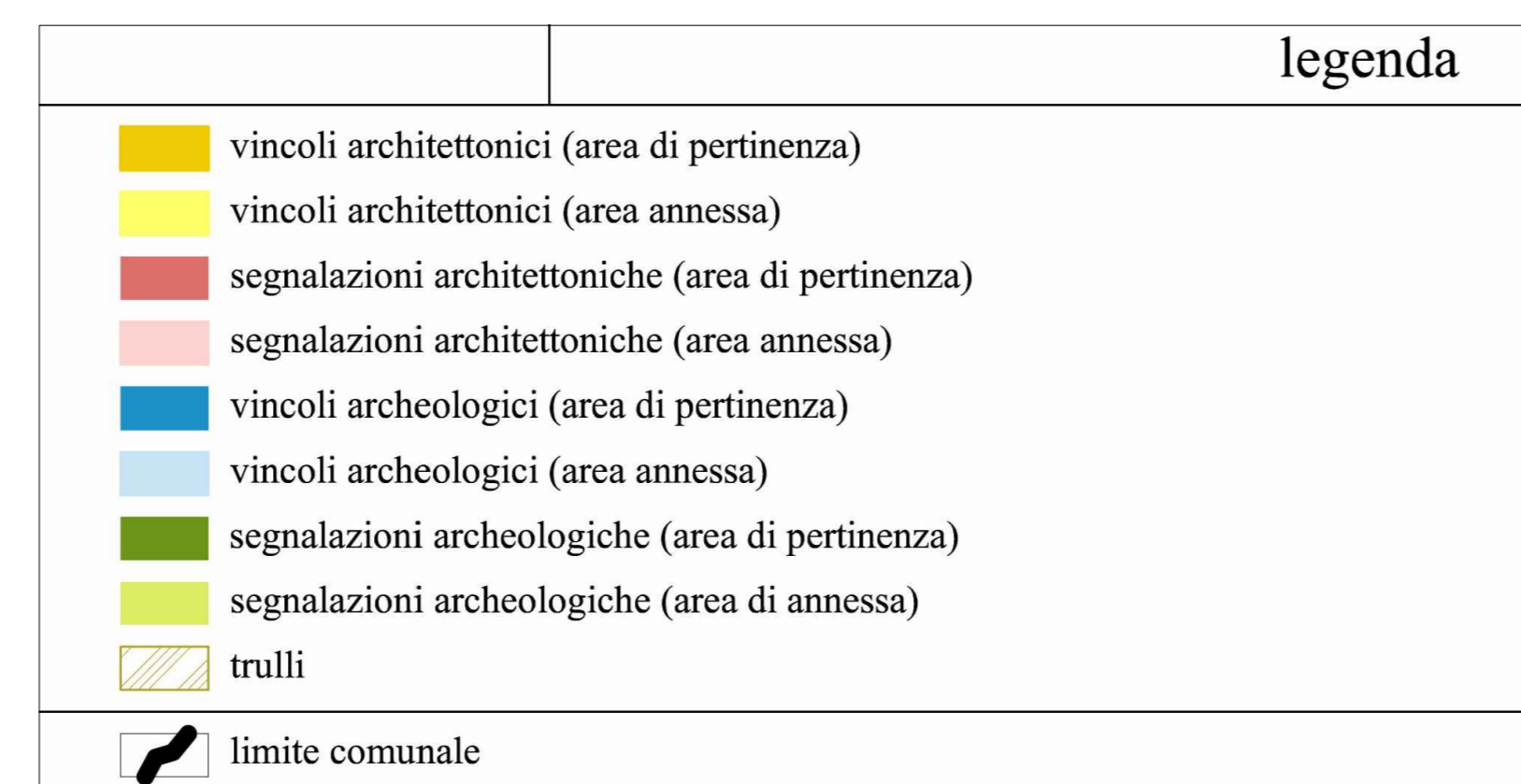


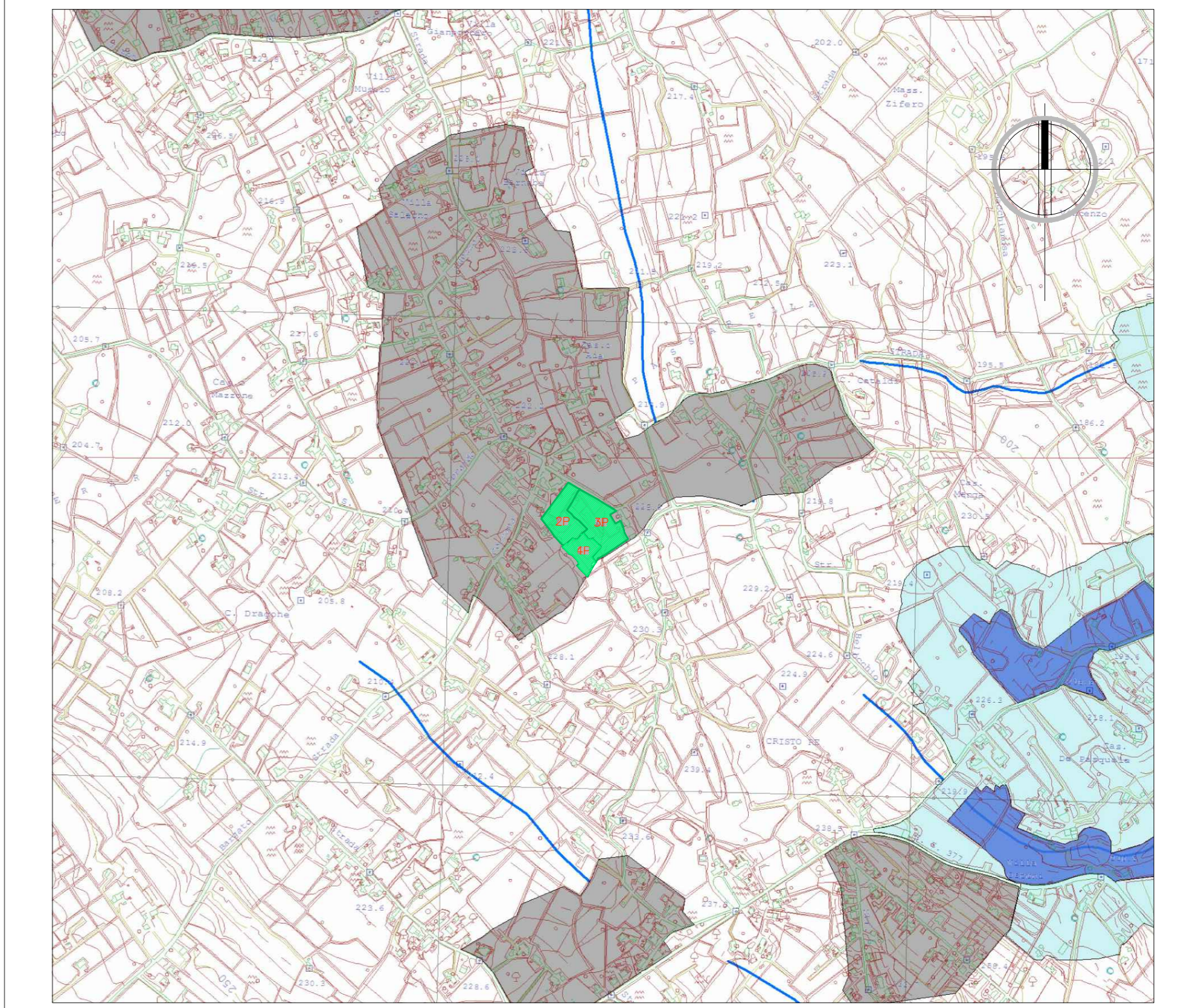
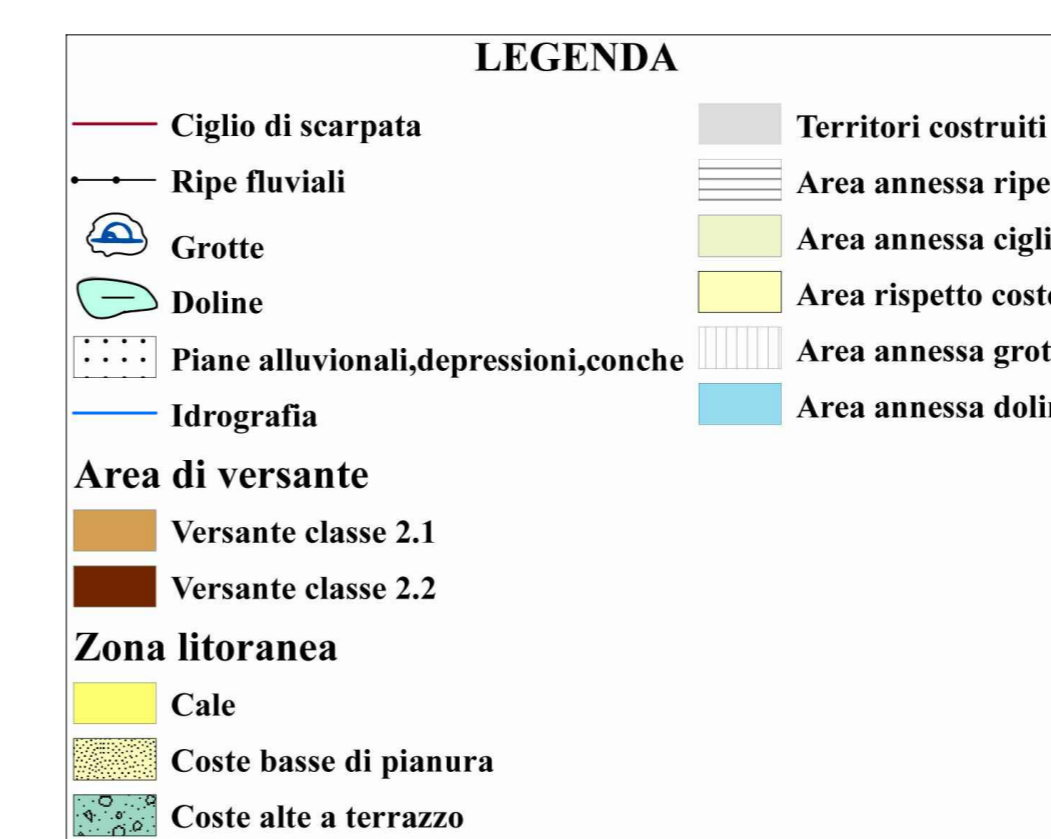
P.U.T.T/P. - AMBITI TERRITORIALI DISTINTI - COMPONENTE VEGETAZIONALE RAPP. 1:10000



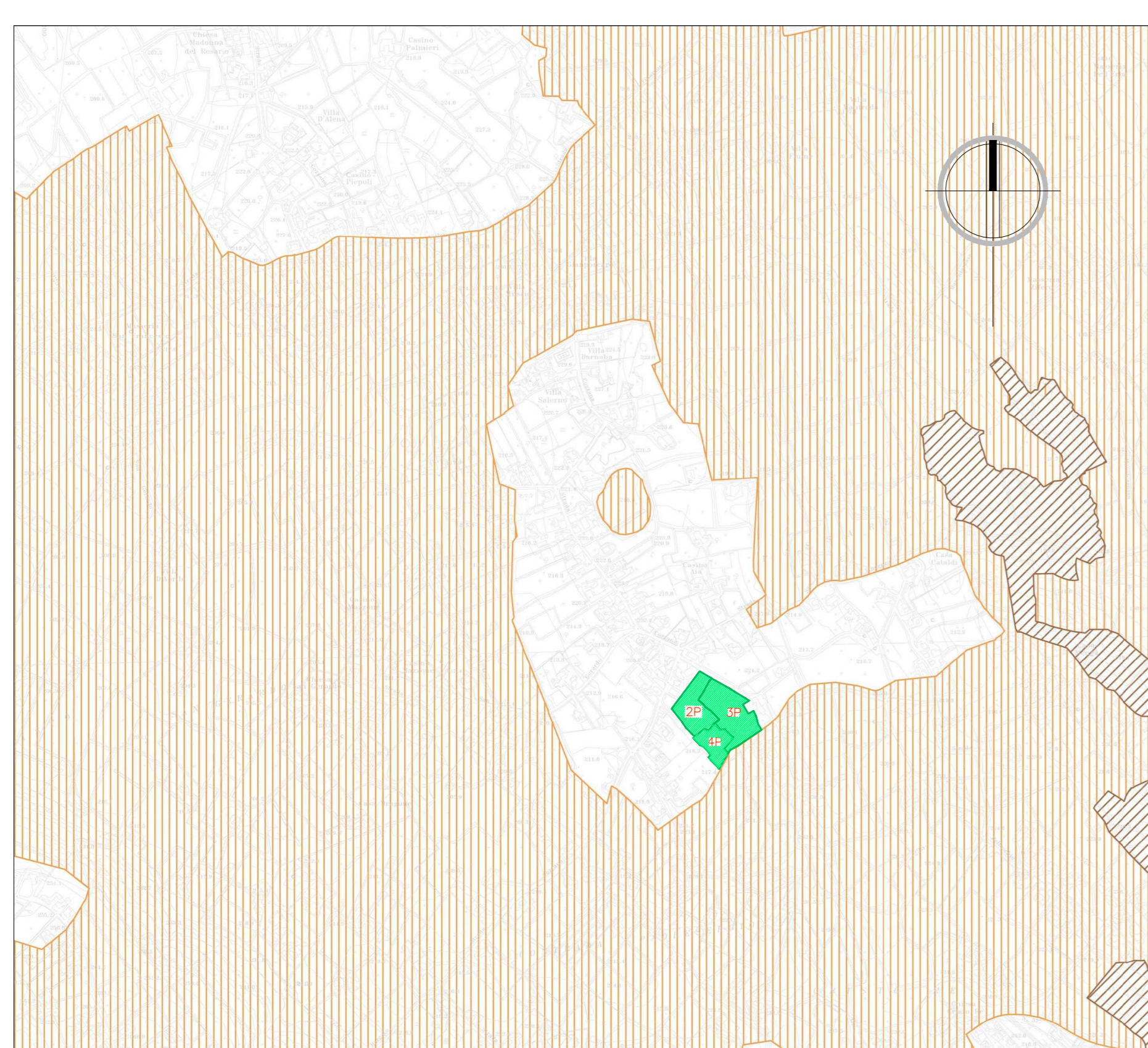
P.U.T.T/P. - AMBITI TERRITORIALI DISTINTI - SISTEMA DELLA STRATIFICAZIONE STORICA DELL'ORGANIZZAZIONE INSEDIATIVA RAPP. 1:10000



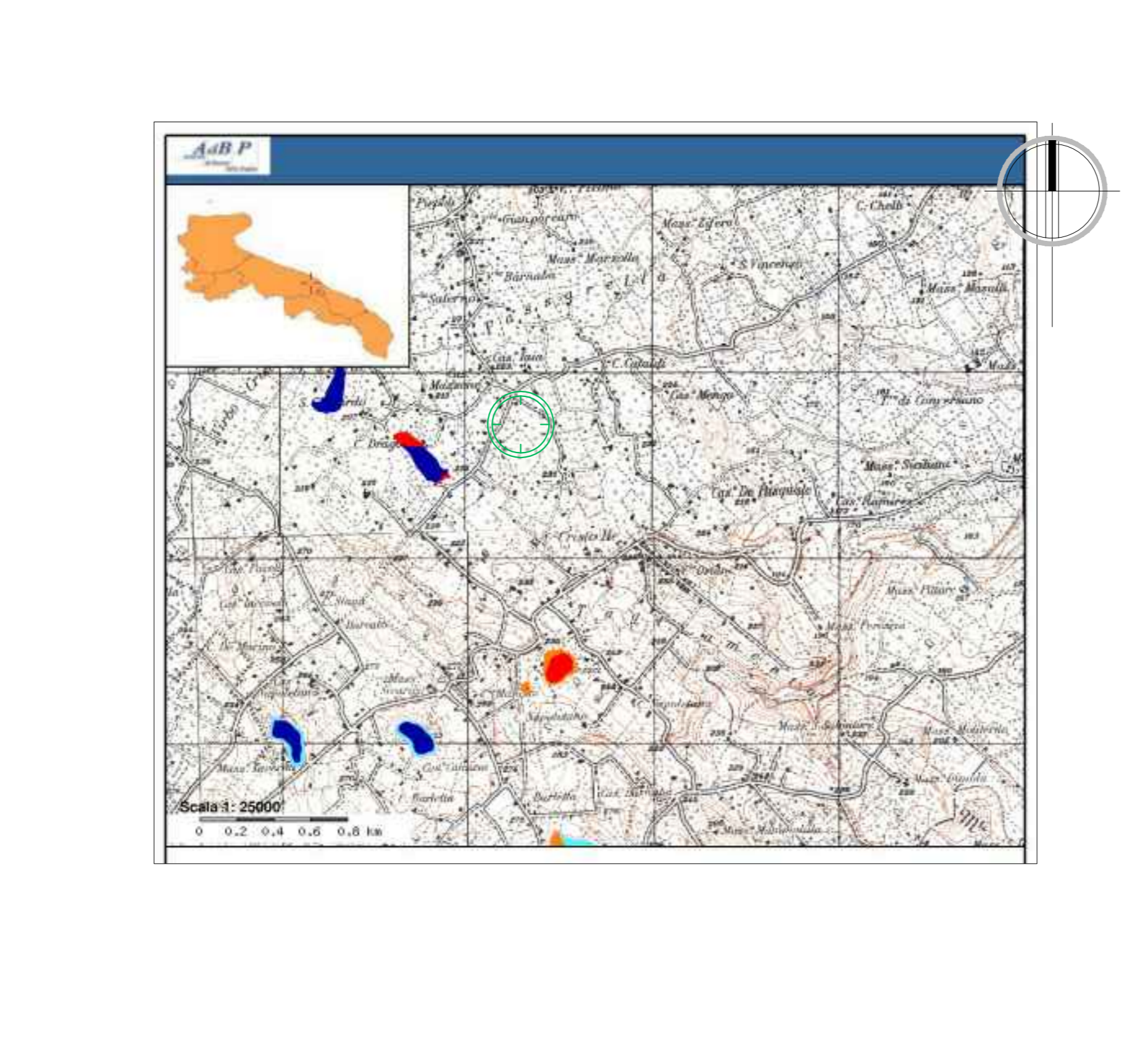
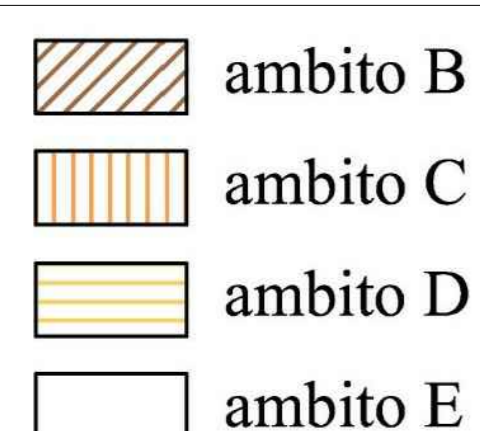
P.U.T.T/P. - AMBITI TERRITORIALI DISTINTI - GEOMORFOLOGIA RAPP. 1:10000



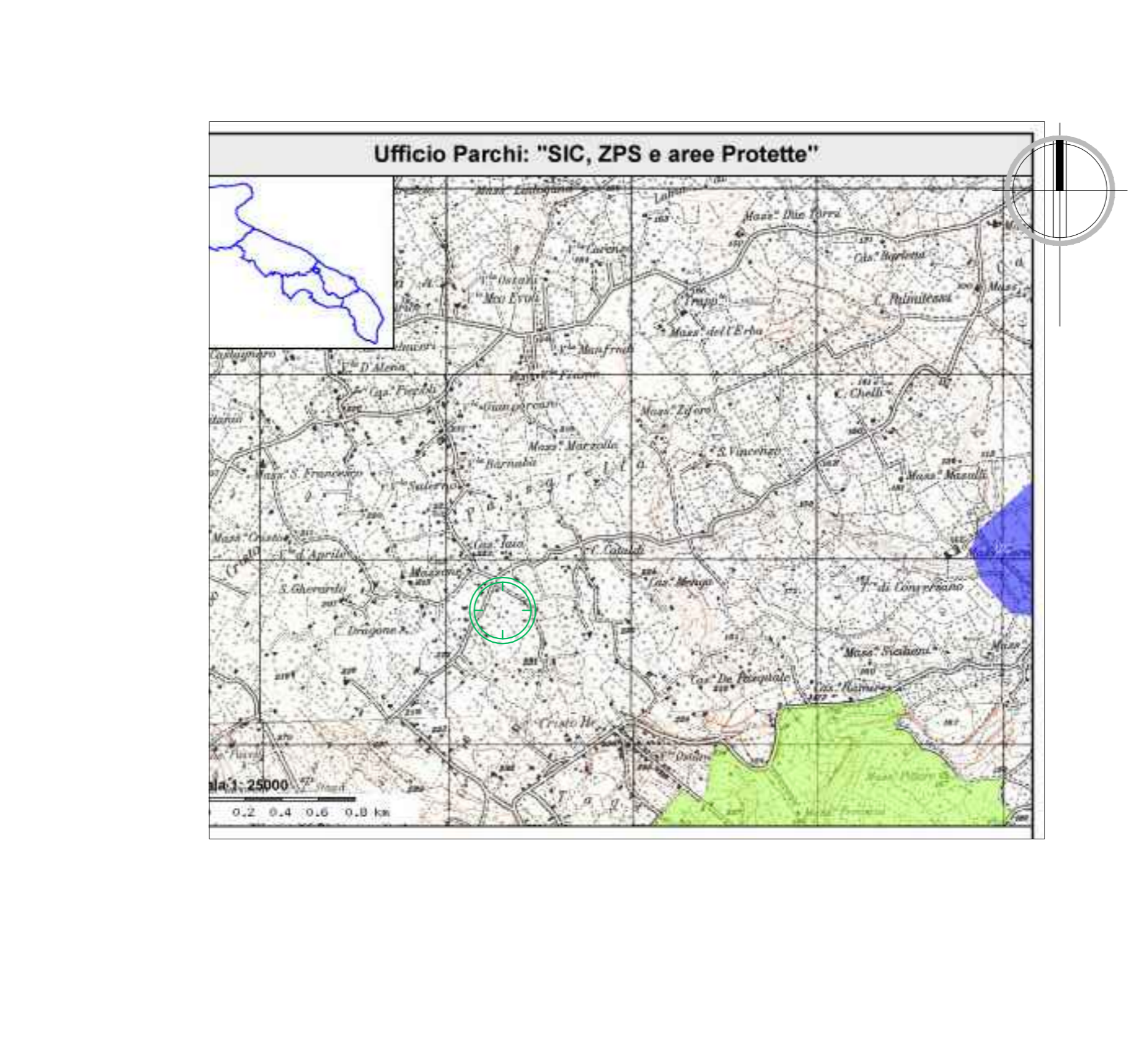
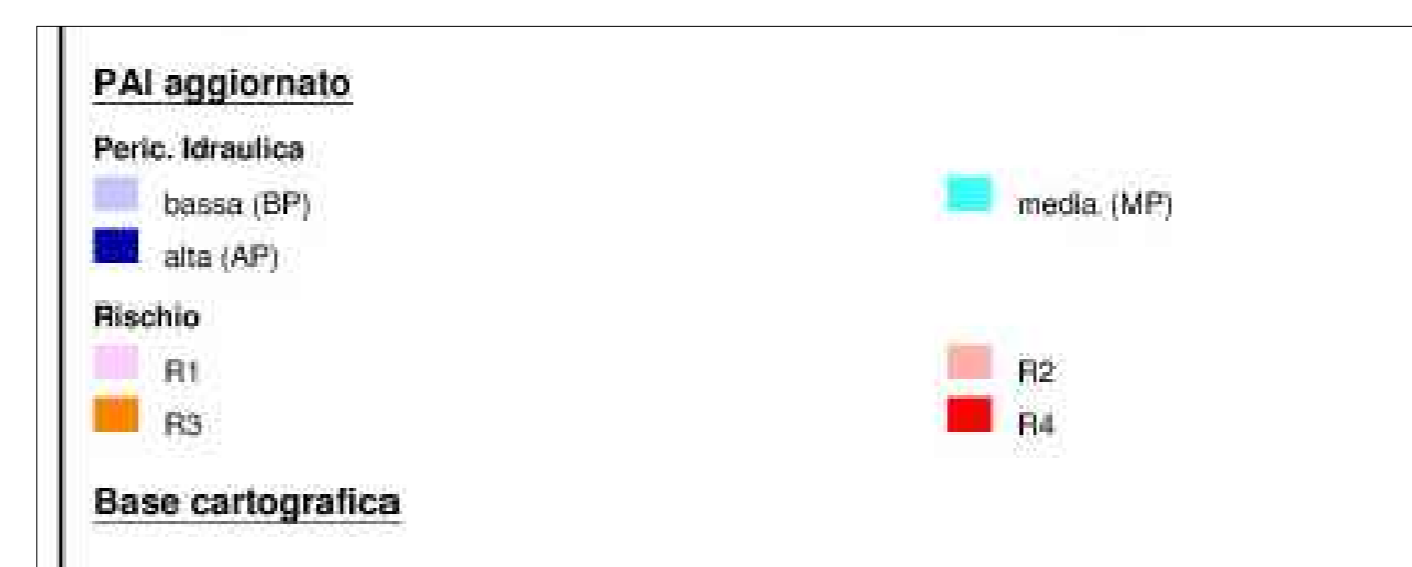
P.U.T.T/P. - AMBITI TERRITORIALI DISTINTI - IDROLOGIA SUPERFICIALE E VINCOLI IDROGEOLOGICI RAPP. 1:10000



P.U.T.T/P. - AMBITI TERRITORIALI ESTESI - RAPP. 1:10000



PIANO DI ASSETTO IDROGEOLOGICO RAPP. 1:25000



SITI DI INTERESSE COMUNITARIO RAPP. 1:25000



STUDIO TECNICO			
FILME ING. VITO ANDREA			
 Certificato n. 6941/02/5		Via Martiri 16.03.1978 n.28 - 70043 - Monopoli (Bari) Telefax 0809.303120 - E-mail: ingfilme@media.it	
COMUNE DI MONOPOLI PROPOSTA DI ADOZIONE PIANO URBANISTICO ESECUTIVO (P.U.E.) ALLA CONTRADA PADRESERGIO COMPARTI 2P-3P-4P		TAV. EA-02	
PROGETTO		STRALCI STRUMENTI DI PIANIFICAZIONE	
DIR. LAVORI		COMMITTENTE	
CALCOLI IN C.A.		IMPRESA	
2			
1			
0	Emissione	30-04-2011	0800 X. FINE X. X. FINE X. X.
N°	D E S C R I Z I O N E	D A T A DISSEGNA TO	CONTROLLATO APPROVATO